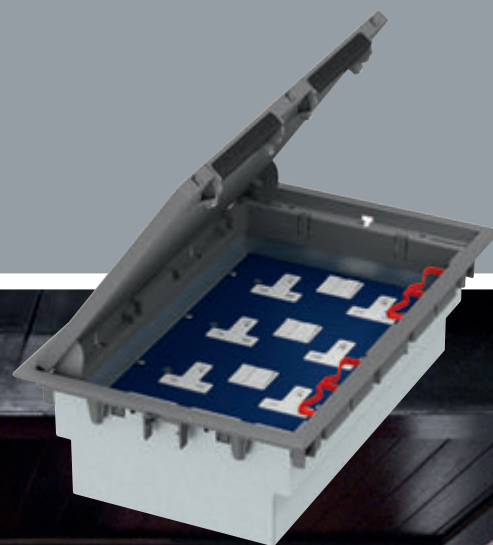


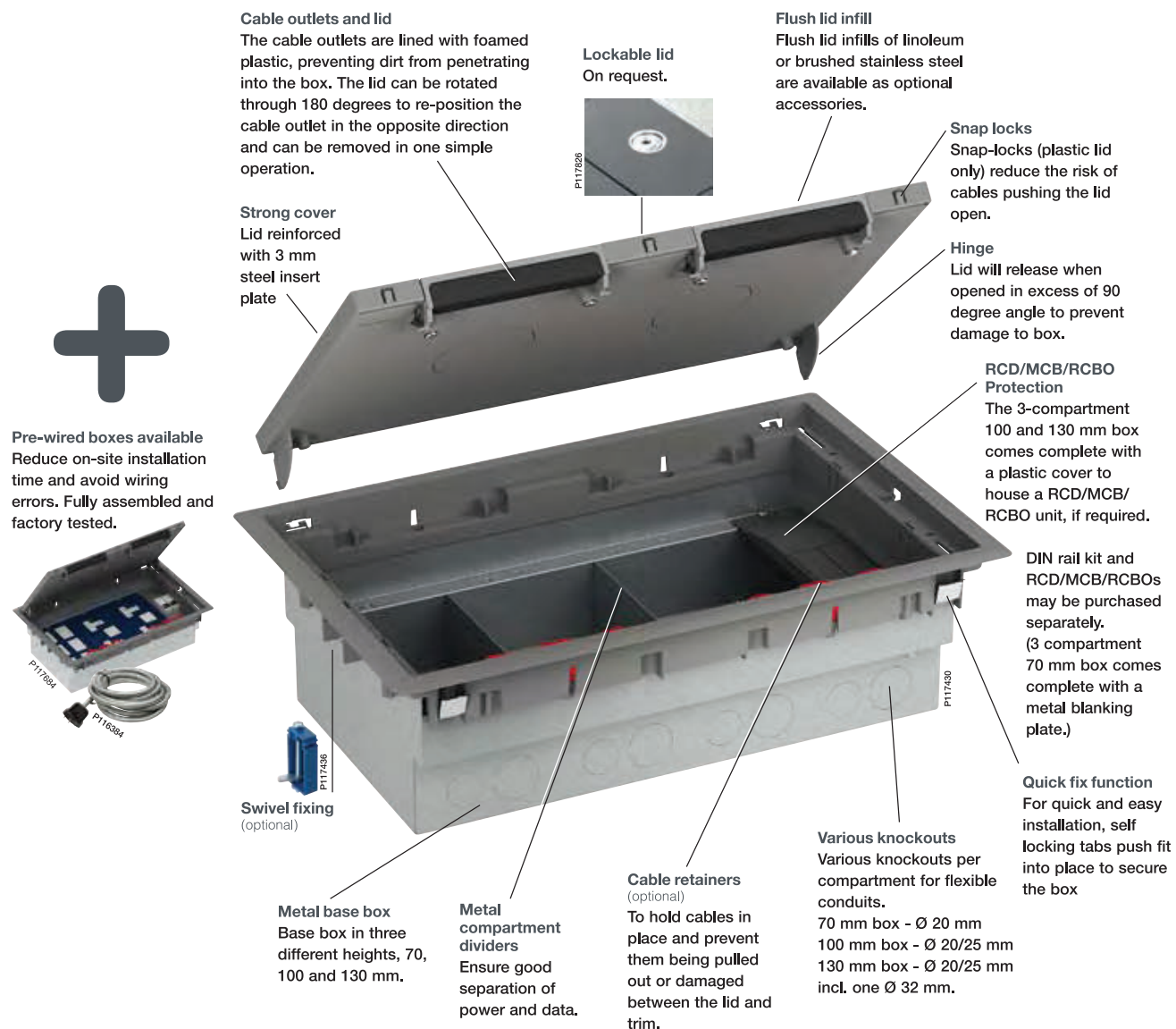
Mita Floor Boxes

Floor outlet boxes
British Standard



3 and 4 compartment floor boxes

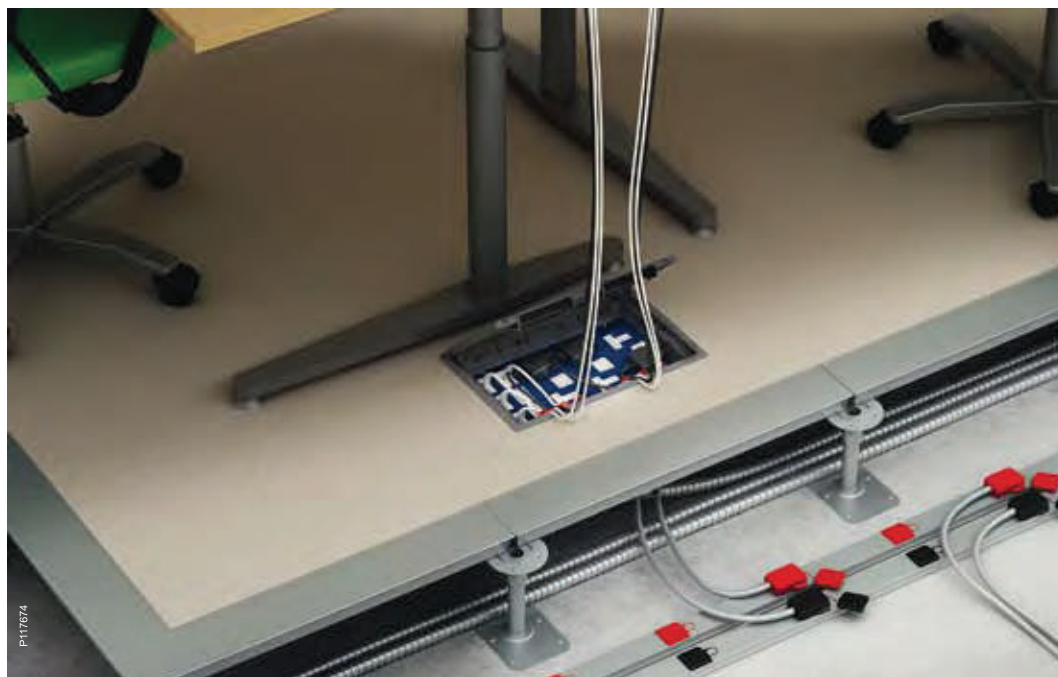
Supplying power and data via raised floor solution offers many advantages for the modern office. Mita floor boxes give you access to power and data wherever it is required. Both the end-user and the installer can benefit from the accessibility.



Easy to install and use



Flexible solution
Use underfloor powertrack and tap-off units from Schneider Electric.



Installations of raised access floor box with underfloor powertrack and tap-off units
A convenient and flexible solution for power distribution in premises where raised access floors have been installed.



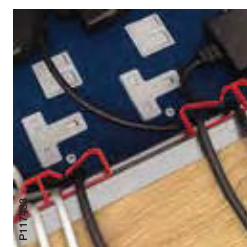
Quick-fix function
For quick and easy installation, self-locking tabs push-fit into place to secure the box, effective in all floor types. No tools are required.



High capacity
Three or four plates, with metal compartment dividers for good separation of power and data.



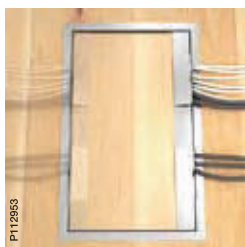
RCD/MCB/RCBO
3-compartment 100 and 130 mm box comes complete with cover to house a RCD/MCB/RCBO unit, if required. DIN rail kit and RCD/MCB/RCBOs may be purchased separately.



Cable retainers (optional)
To hold cables in place and prevent them being pulled out or damaged between the lid and trim.



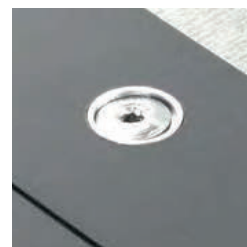
Self-closing
The lid is self-closing to minimize the risk of accidents. When opened in excess of 90 degrees, the lid will release.



Cable outlets
The lid has double cable outlets and can be turned through 180 degrees.



Carpet/infill recess
In the plastic trim box the maximum thickness of the insert material is 6 mm and in the stainless steel trim box it is 15 mm.

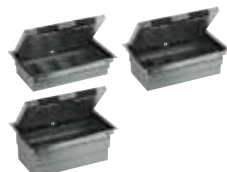
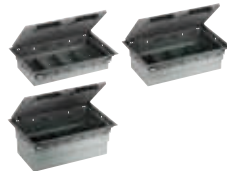
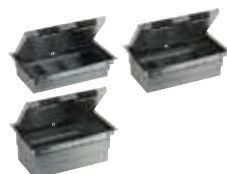
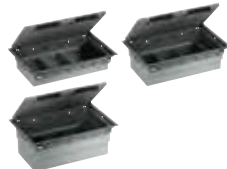


Lockable lid (optional)
Available pre-fit, on request.

Floor outlet boxes

Range

Empty floor outlet boxes



Type	Colour	Dimensions A/B/C (mm)	Qty per package	Ref. No.
------	--------	--------------------------	--------------------	----------

Complete, rectangular, three or four compartment floor outlet box for use with British Standard outlets. A wide range of mounting plates in both 75 and 87 mm width are available. The floor box is provided with a quick-fix, metal base box. The lid, with integrated cable outlets, can be installed in two positions and can easily be removed during installation and use. The lid can be fitted with a floor material insert; the plastic floor box has a ready-to-use infill available as an accessory.

Three-compartment floor outlet boxes for 87 mm mounting plates

The three-compartment plastic trimmed floor box has a maximum outlet capacity of 3x2 gang accessories. The 70 mm deep box comes with a steel cover over the empty space next to the 3rd compartment, whereas the 100 and 130 mm deep versions have a plastic cover. The space underneath the cover gives extra cable space / enhanced bending radius, to the 3rd compartment. Alternatively, for 100 and 130 mm deep versions, modular DIN-rail equipment, such as an RCD earth leakage breaker, can be used by fixing the optional DIN-rail kit in the bottom of the base box and removing the knock-outs in the plastic cover.

Material: PA/ABS, sheet steel.

70 mm deep	Grey	70/222/348	1	INS53070
85 mm deep	Grey	85/222/348	1	INS53085
100 mm deep	Grey	100/222/348	1	INS53100
130 mm deep	Grey	130/222/348	1	INS53130

As the above but in brushed stainless steel.

Material: Stainless steel, sheet steel. Available Autumn 2010

70 mm deep	—	84/222/348	1	INS53170
100 mm deep	—	114/222/348	1	INS53200
130 mm deep	—	144/222/348	1	INS53230

Four-compartment floor outlet boxes for 75 mm mounting plates

The four-compartment plastic trimmed floor box has a maximum outlet capacity of 4x75mm wide plates (maximum of 3 twin switch sockets + 1 data plate). DIN-rail not compatible with four-compartment box.

Material: PA/ABS, sheet steel.

70 mm deep	Grey	70/222/348	1	INS54070
100 mm deep	Grey	100/222/348	1	INS54100
130 mm deep	Grey	130/222/348	1	INS54130

As the above but in brushed stainless steel.

Material: Stainless steel, sheet steel. Available Autumn 2010

70 mm deep	—	84/222/348	1	INS54170
100 mm deep	—	114/222/348	1	INS54200
130 mm deep	—	144/222/348	1	INS54230

Pre-wired floor boxes



Three-compartment floor outlet boxes

Ready-to-use, pre-wired plastic trimmed floor boxes, 100 mm deep. Configuration options include one/two twin switched sockets, standard earth (SE) or clean earth (CE) and connection to a 3 m 32A unfused or a 5 m 13A fused tap-off for busbar connection (other variations available on request). RCD can be fitted as an option.

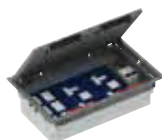
Material: PA/ABS, sheet steel.

Type A One twin BS 13A SSO (SE), 3 m /32A unfused tap-off with 30mA RCD fitted	Grey	100/222/348	1	INS53101 INS53101RCD
Type B Two twin BS 13A SSO (SE), 3 m /32A unfused tap-off with 30mA RCD fitted	Grey	100/222/348	1	INS53102 INS53102RCD
Type C One twin BS 13A SSO (SE), 5 m /13A fused tap-off with 30mA RCD fitted	Grey	100/222/348	1	INS53103 INS53103RCD
Type D Two twin BS 13A SSO (SE), 5 m /13A fused tap-off with 30mA RCD fitted	Grey	100/222/348	1	INS53104 INS53104RCD
Type E One twin BS 13A SSO (CE), 3 m /32A unfused (CE) tap-off with 30mA RCD fitted	Grey	100/222/348	1	INS53105 INS53105RCD
Type F Two twin BS 13A SSO (CE), 3 m /32A unfused (CE) tap-off with 30mA RCD fitted	Grey	100/222/348	1	INS53106 INS53106RCD

Floor outlet boxes

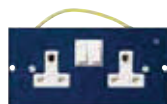
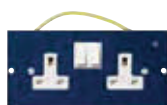
Range

Pre-wired floor boxes



Type	Colour	Dimensions A/B/C (mm)	Qty per package	Ref. No.
Three-compartment floor outlet boxes, cont.				
Type G One twin BS 13A SSO (CE), 5 m /13A fused (CE) tap-off with 30mA RCD fitted	Grey	100/222/348	1	INS53107
				INS53107RCD
Type H Two twin BS 13A SSO (CE), 5 m /13A fused (CE) tap-off with 30mA RCD fitted	Grey	100/222/348	1	INS53108
				INS53108RCD
Four-compartment floor outlet boxes				
Ready-to-use, pre-wired floor boxes, 100 mm deep. Configuration options include two/three twin switched sockets, standard earth (SE) or clean earth (CE), and connection to a 3m 32A unfused or a 5 m 13A fused tap-off for powertrack connection (other variations available on request). Material: PA/ABS, sheet steel.				
Type I Two twin BS 13A SSO (SE), 3 m /32A unfused tap-off	Grey	100/222/348	1	INS54101
Type J Three twin BS 13A SSO (SE), 3 m /32A unfused tap-off	Grey	100/222/348	1	INS54102
Type K Two twin BS 13A SSO (SE), 5 m /13A fused tap-off	Grey	100/222/348	1	INS54103
Type L Three twin BS 13A SSO (SE), 5 m /13A fused tap-off	Grey	100/222/348	1	INS54104
Type M Two twin BS 13A SSO (CE), 3 m /32A unfused (CE) tap-off	Grey	100/222/348	1	INS54105
Type N Three twin BS 13A SSO (CE), 3 m /32A unfused (CE) tap-off	Grey	100/222/348	1	INS54106
Type O Two twin BS 13A SSO (CE), 5 m /13A fused (CE) tap-off	Grey	100/222/348	1	INS54107
Type P Three twin BS 13A SSO (CE), 5 m /13A fused (CE) tap-off for powertrack	Grey	100/222/348	1	INS54108

Mounting plates for 3-compartment floor boxes



87 mm wide plates with outlets				
173x87 mm plates with British Standard power sockets, for use with a 3-compartment floor box. Material: Sheet steel.				
Q301CE With twin BS1363 13A switched socket (dual earth and clean earth)	Blue	32/87/173	1	INS55300
Q301 With twin BS1363 13A switched socket (dual earth)	Blue	32/87/173	1	INS55301
Q313 With twin BS5733 13A (non-standard and clean earth) socket	Blue	28/87/173	1	INS55313
Q312 With three single BS1363 13A sockets	Blue	28/87/173	1	INS55312



Description

The Mita floor box range contains a complete portfolio of products for installation of British Standard outlets for power and data in raised floor applications.

Plastic and stainless steel trimmed floor boxes are available, each including lid, carpet trims and a metal base box, ready for mounting either three or four outlets.

The lid can be infilled with various floor materials. The plastic trim can accommodate an insert of up to 6 mm thickness, and ready-to-use lid infills of grey linoleum or stainless steel are available. The stainless steel trim can accommodate up to 15 mm thick insert materials, such as carpet, wood or stone tiles.

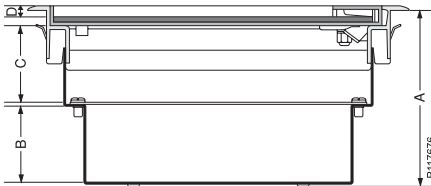
All floor boxes feature a convenient quick-fix fixing system, enabling a tool-free and secure fit into the floor.

The plastic floor boxes are also available in pre-wired versions.

Benefits

- Quick and easy installation, without tools
- Large outlet capacity
- Wide range of plates and accessories to satisfy end-user requirements
- Three depths: 70, 100 and 130 mm
- The 100 and 130 mm 3-compartment versions are prepared for integration of a circuit breaker
- Lid recesses can be infilled with most common floor finishes
- Reversible, self closing lid
- Durable and scratch-resistant material
- Pre-wired versions: fully assembled and factory tested to eliminate wiring errors and loss of components and reduced installation times
- According to BS EN 60670-23:2008 standard

Dimensions



	A mm	B mm	C mm	D mm
Plastic trimmed boxes				
INS53070	75	30	30	6
INS54070				
INS53100	105	45	45	6
INS54100				
INS53130	135	60	60	6
INS54130				
Steel trimmed boxes				
INS53170	84	30	30	15
INS54170				
INS53200	114	45	45	15
INS54200				
INS53230	144	60	60	15
INS54230				

Technical and Material data

PA/ABS	Density	1.12 g/cm ³
	Linear expansion	70x10 ⁻⁶ m/m°C
	Water absorption	0.9%
	Volume resistivity	10 ¹⁴ Ω cm
	Dielectric strength	19 kV/mm
	Colour	Grey RAL 7011
PA6	Density	1.13 g/cm ³
	Linear expansion	70-100x10 ⁻⁶ m/m °C
	Colour	Blue RAL 5003
Sheet steel	Specification	S 350 GD
	Density	7.8 g/cm ³
	Surface treatment	Zinc coated
Stainless steel	Specification	X5CrNi 18-10
	Density	7.8 g/cm ³
Cable capacity	1720 mm ² , max. cable Ø 11 mm	
Temperature range	Operating temperature from -25°C to +60°C	
Degree of protection	IP20	
Standards	The products comply with BS EN 60670-23:2008	
	The products satisfy the provisions for CE marking according to the Low Voltage Directive 73/23/EEC and 93/68/EEC	

Floor cut-out

